

Indiana State Police & Indiana DOT TMC Integration



ITS Midwest Annual Meeting
Jay Wasson, P.E.
Indiana Dept. of Transportation



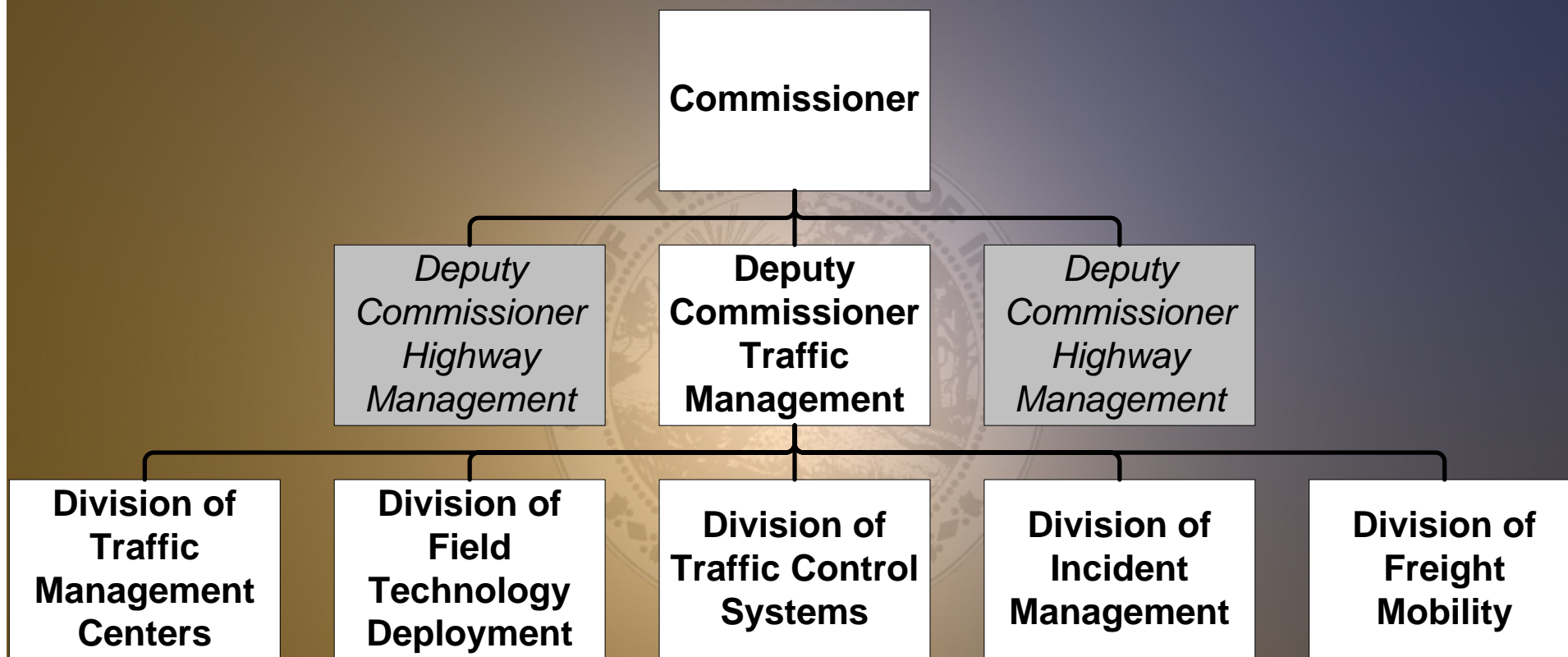
Today's Presentation

- Status of INDOT Traffic Management Centers in context of Department Re-Organization
- Role of TMC in INDOT/ISP Relationship
- Overview of three recent newly integrated processes
- A Look at future opportunities...





Traffic Mgmt. Business Unit



The formerly referenced “ITS” district elements of INDOT were centralized into a statewide Traffic Management Business Unit.





Role of TMCs in the INDOT / ISP Relationship

The Traffic Management Centers have served as a catalyst to foster an environment that makes interagency cooperation infectious!

- Breaking down traditional territorial barriers.
 - Daily observation, communication and resolution of real world problems.
 - Shared success stories.
-
- Best opportunities cultivated in the trenches with support and encouragement of management.
 - “Integration” does not necessarily require a high-tech strategy!





Abandoned Vehicles

- Analysis of statewide freeway service patrol data indicate abandoned vehicles account for 20% - 30% of logged run types.
- Ratio of State Troopers to Interstate Vehicle Miles Traveled continues to decline.
- Abandoned vehicle tagging and impound fall below other high priority law enforcement activities.
- Abandoned vehicles have direct impact on ability to conduct incident and traffic management capabilities.





Abandoned Vehicles

- Hoosier Helpers now tag with ISP stickers.
 - Single tag = vehicle checked.
 - Second tag = time expired.





Commercial Vehicle Ops

TMC acts as “ground traffic control” for ISP escorted super-load transports entering Central Indiana.





Homeland Security

Joint participation in Hurricane Katrina response through Indiana Department of Homeland Security Operation Hoosier Relief...

641 assists between 9/12 -> 30 on I-10 & I-110.





Future Opportunities...

- Legislation currently under consideration by General Assembly granting Freeway Service Patrol Operators impound authority.
- Automated data sharing through statewide CAD system. (Spin off of statewide 800 MHz communications system.)
- Modernization of ISP standard operating procedures and training related to “quick clearance.”

